



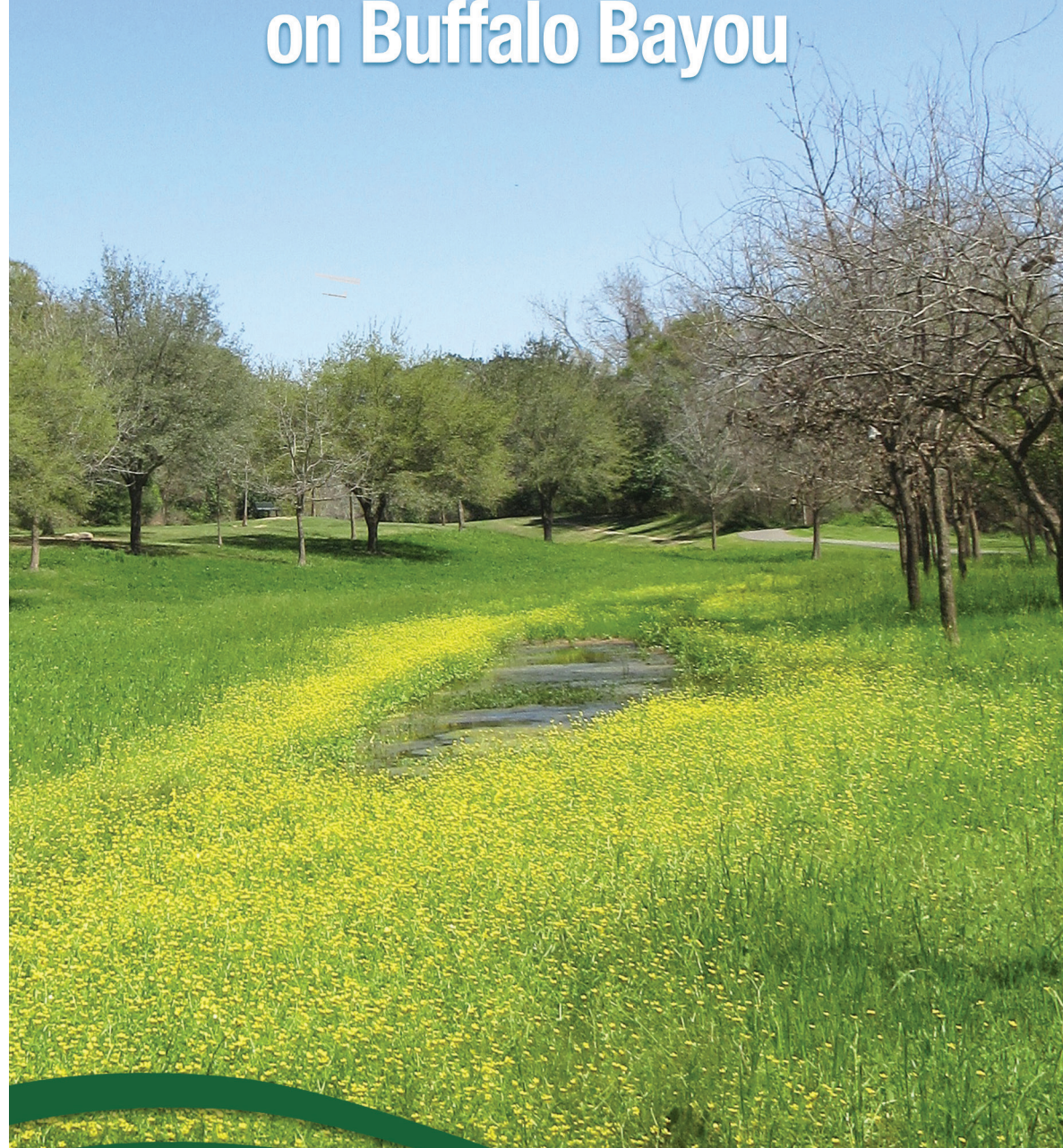
9900 Northwest Freeway
Houston, Texas 77092
HCFCD.org

**READ ABOUT WHAT'S HAPPENING
IN YOUR NEIGHBORHOOD**

Visit www.hcfcd.org
to find out more information.

PRSR STD
US Postage
PAID
Houston, TX
Permit No. 11726

Linear Stormwater Detention on Buffalo Bayou



An Upcoming Project of the
Harris County Flood Control District

Jan
2019

Linear Stormwater Detention on Buffalo Bayou

In an effort to keep you informed about the Harris County Flood Control District's continuing improvements in the Buffalo Bayou watershed, we want to notify you of an upcoming project. Beginning in January 2019, weather permitting and pending final approvals, the Flood Control District will begin construction on linear stormwater detention compartments along the south bank of Buffalo Bayou between Eldridge Parkway and Dairy Ashford Road. This is the first phase of a multi-phase project to add linear detention along Buffalo Bayou in multiple locations between State Highway 6 and the Sam Houston Tollway, on property owned by the Flood Control District.

Linear stormwater detention, which resembles gently sloped grassy areas, already exists along the north bank of Buffalo Bayou in this area. (The cover photo of this advisory is of an existing Buffalo Bayou linear detention compartment.) Detention compartments are normally dry, but take in and hold stormwater during periods of heavy rain, releasing the stormwater back to the bayou slowly, by gravity, when water levels in the bayou recede.

Project construction will begin with site preparation to mark and protect vegetated areas and trees that will be preserved during excavation. The next step will be clearing trees and vegetation in the immediate detention compartment construction area and along construction access pathways. Construction will then move to excavation and removal of soil from the linear detention compartments.

Plans for the area include preserving a tree buffer where possible between the detention compartments and adjacent private property, and also preserving some

Linear Stormwater Detention on Buffalo Bayou

Project ID# Z100-00-00-X260

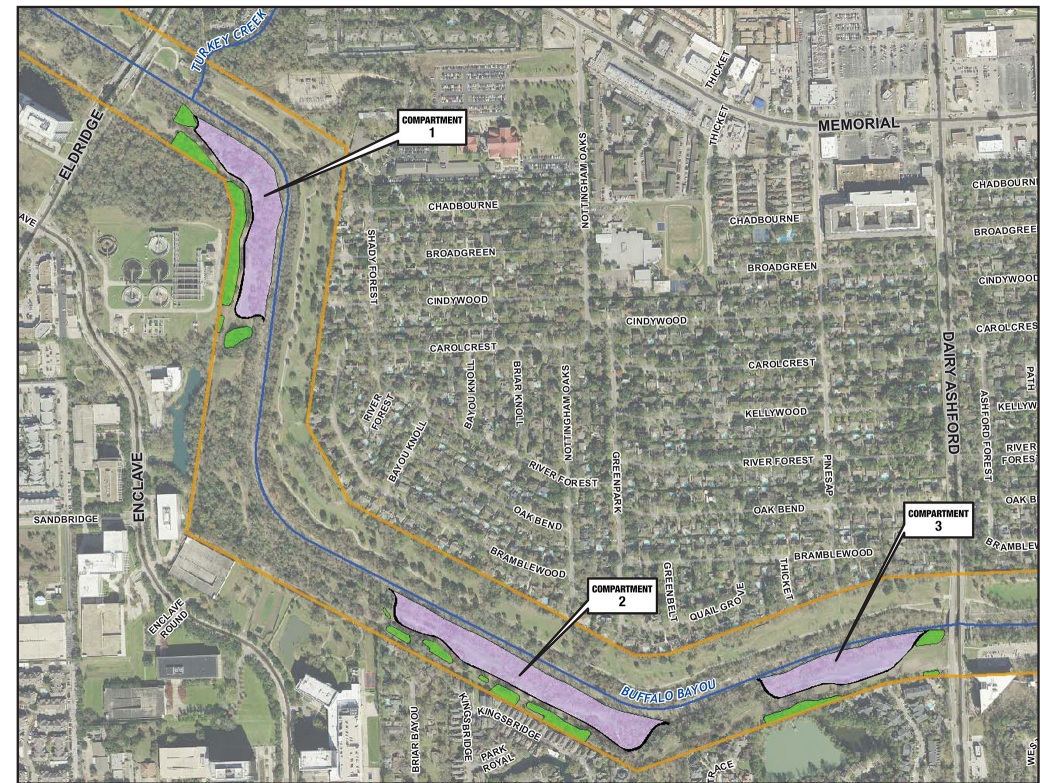
Contractor – Lecon Inc.

Project Amount – \$1,800,000

Construction Start – As early as January 2019

Construction Duration – Approximately seven months for this project

**The Linear Stormwater Detention on Buffalo Bayou project is part of a larger construction contract totaling approximately \$13.3 million. This contract also covers projects to repair and remove sediment from four channels that drain into the Addicks Reservoir.*



— HCFCF Property Line ■ Tree Preservation Areas

trees and vegetation at the water's edge. After construction, opportunities for reforestation around the construction area will be coordinated by Harris County Precinct 3, which will continue to maintain the property as part of Terry Hershey Park.

Construction equipment will access the work area via public easements and the City of Houston Turkey Creek Wastewater Treatment Plant. The contractor will use heavy construction equipment such as dump trucks, excavators and bulldozers to remove trees, vegetation and excavated soil. Motorists are urged to be alert to truck traffic when passing near construction access points.

All trails and footpaths on the south bank of Buffalo Bayou between Eldridge and Dairy Ashford will be closed as needed for public safety for the duration of this project. When visiting Terry Hershey Park, the public is encouraged to enjoy all open sections, to respect warning signs and trail closures, and to avoid construction equipment.

The Flood Control District appreciates your patience through the duration of this project. Updates are available in the Project & Studies section of the Flood Control District website, www.hcfcd.org/F58.



To ask a question or to comment on project activities, please call the Harris County Flood Control District's Project and Study Information Line, (713) 684-4040, or email ProjectCommunications@hcfcd.org