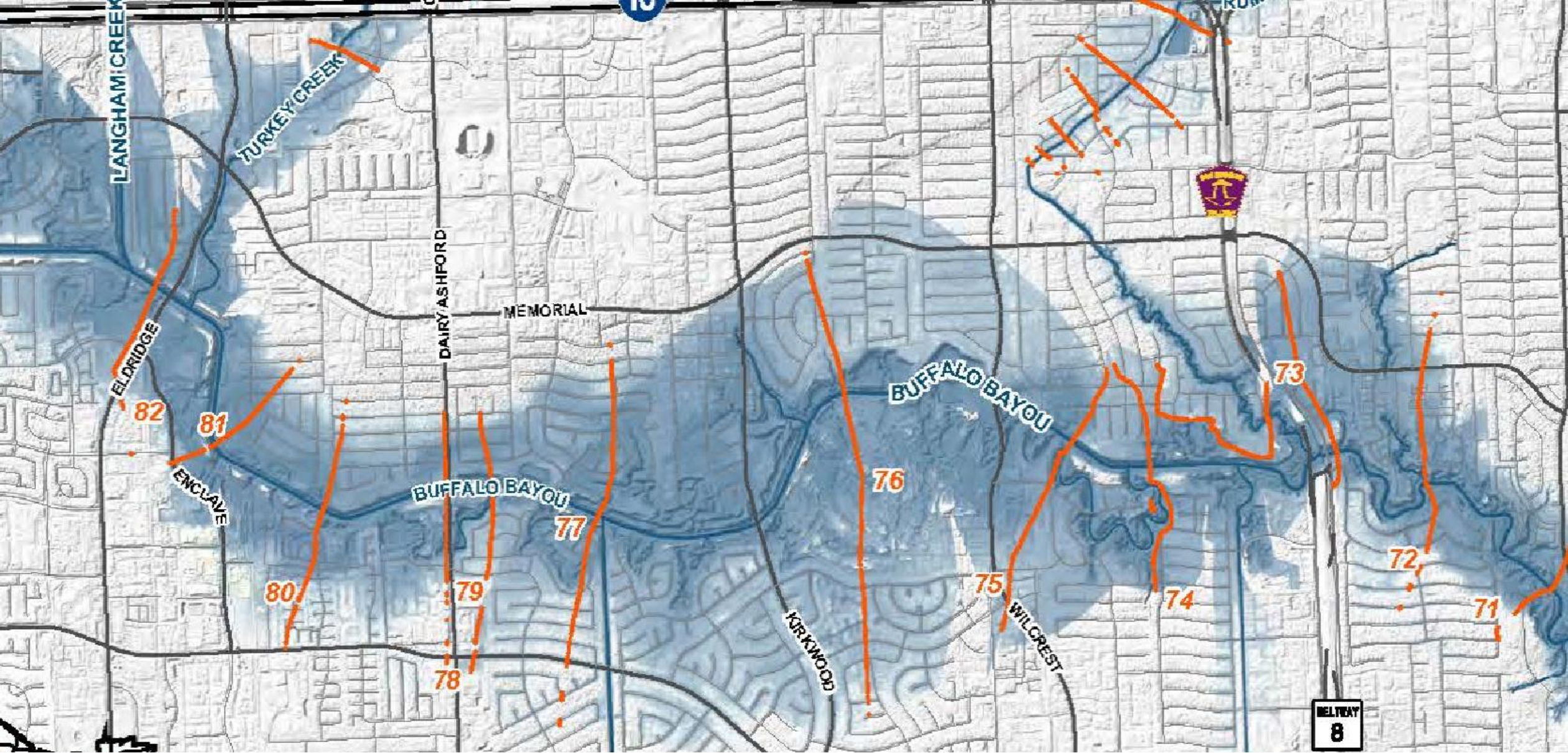


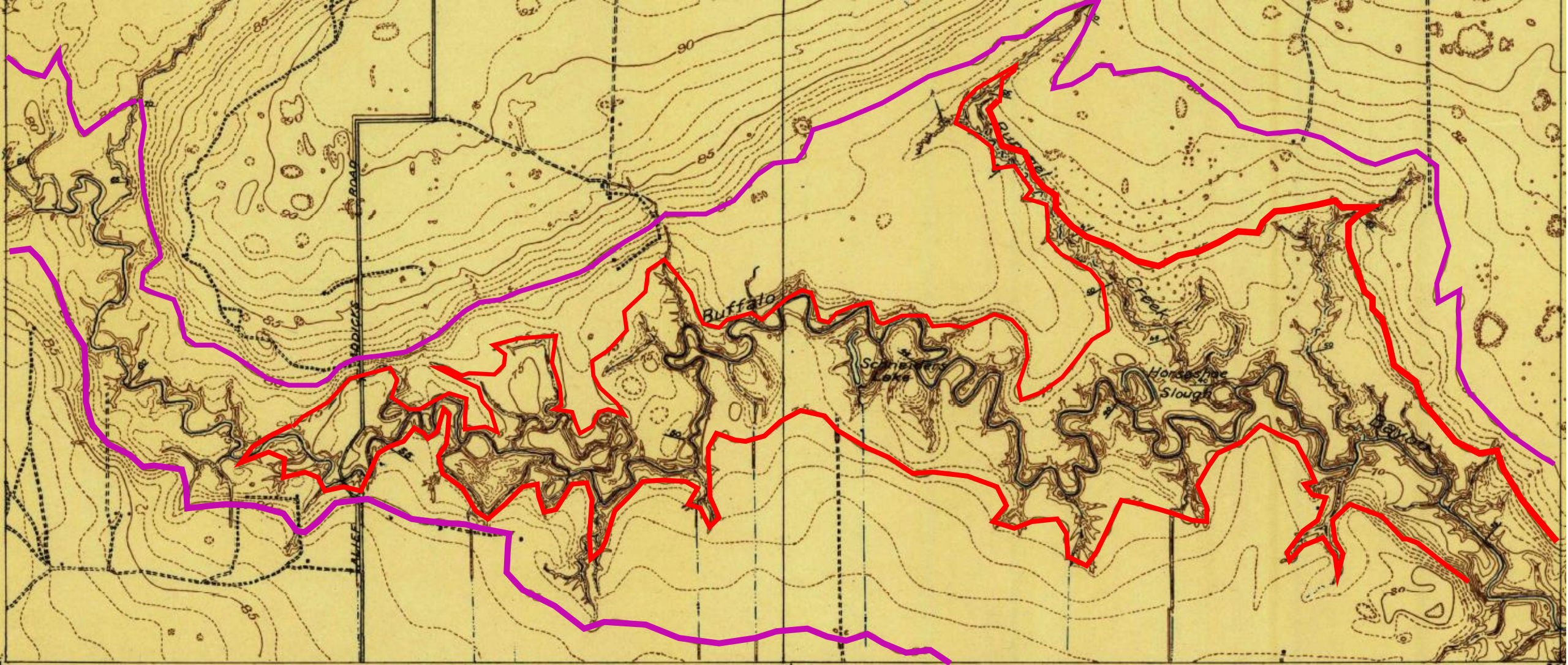
Buffalo Bayou original floodplain and meanders
(1915 USGS topo map) compared to inundation due
to Hurricane Harvey flooding,
from Eldridge to BW8

Tom Helm

September 01, 2018



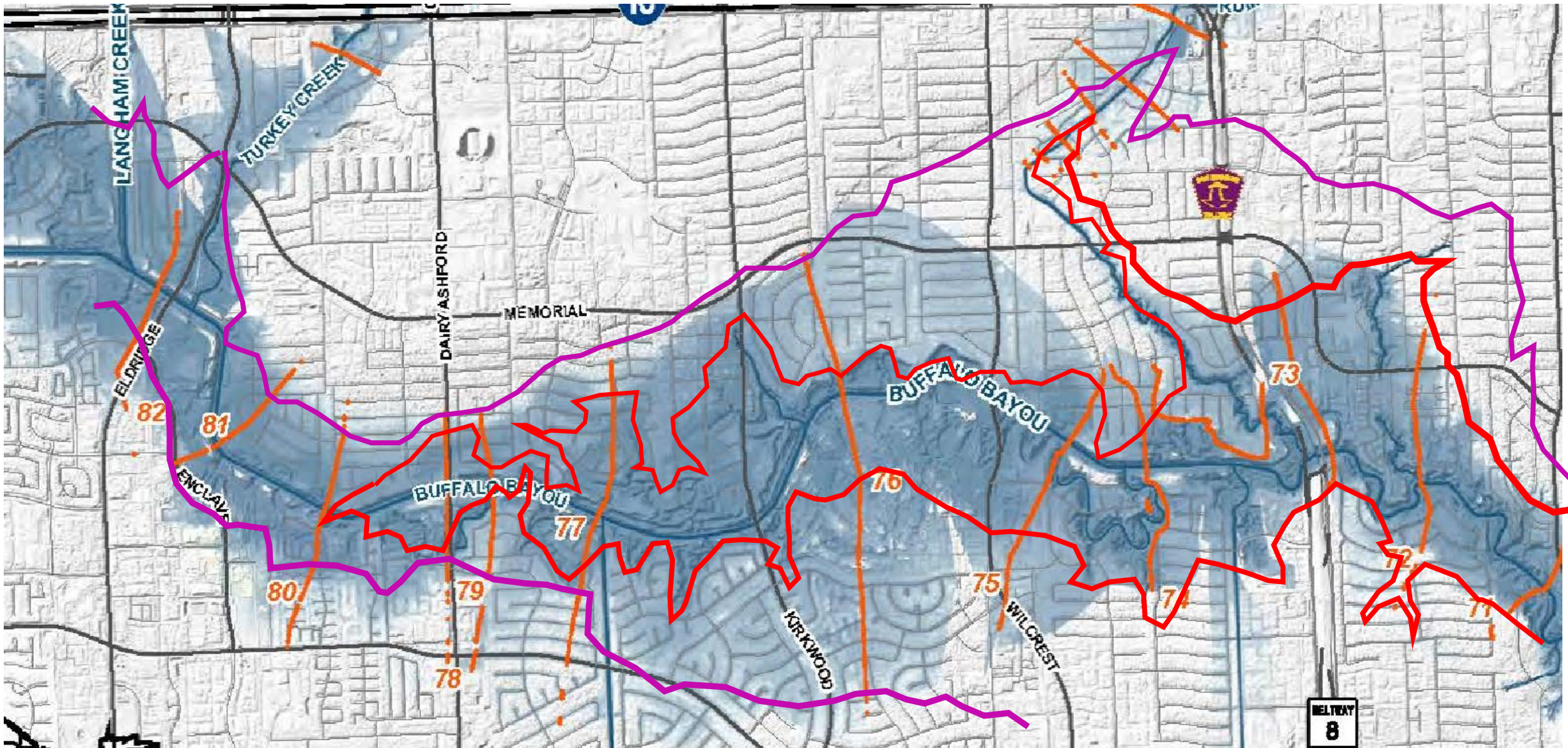
Harvey inundation map, Eldridge to BW8.

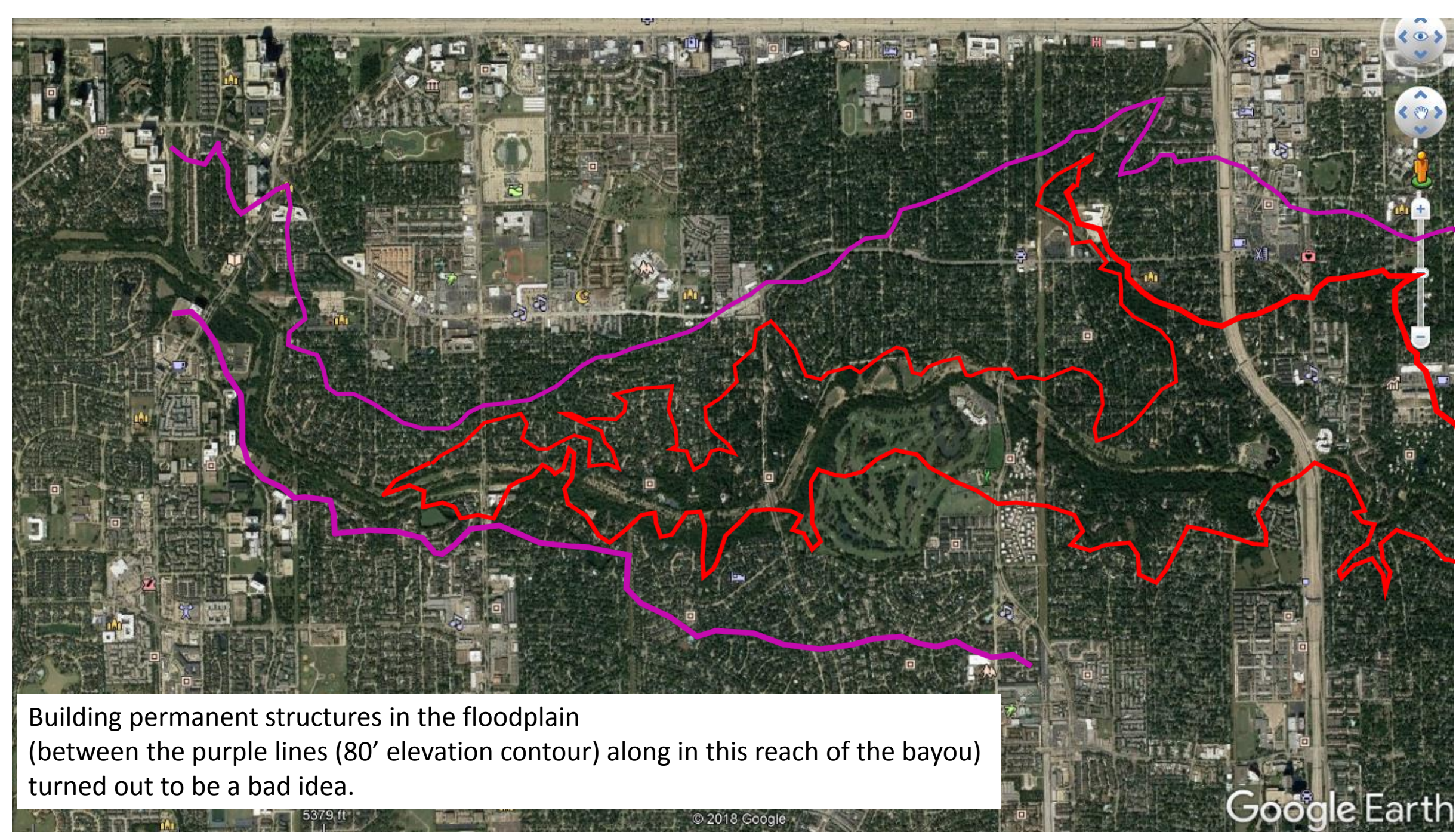


Selection from USGS 1915 topo map "Hillendahl". Purple line = 80' elevation contour. This is the floodplain of this reach of Buffalo Bayou (and associated tributaries.) The 75' contour (red line) defines the meander belt between Dairy Ashford and BW8. Upstream of Dairy Ashford, the meander belt shifts to the 80' contour.

Harvey inundation map, Eldridge to BW8.

80' elevation contour in purple. 75' elevation in red. Harvey flood inundation in blue shading.





Building permanent structures in the floodplain
(between the purple lines (80' elevation contour) along in this reach of the bayou)
turned out to be a bad idea.